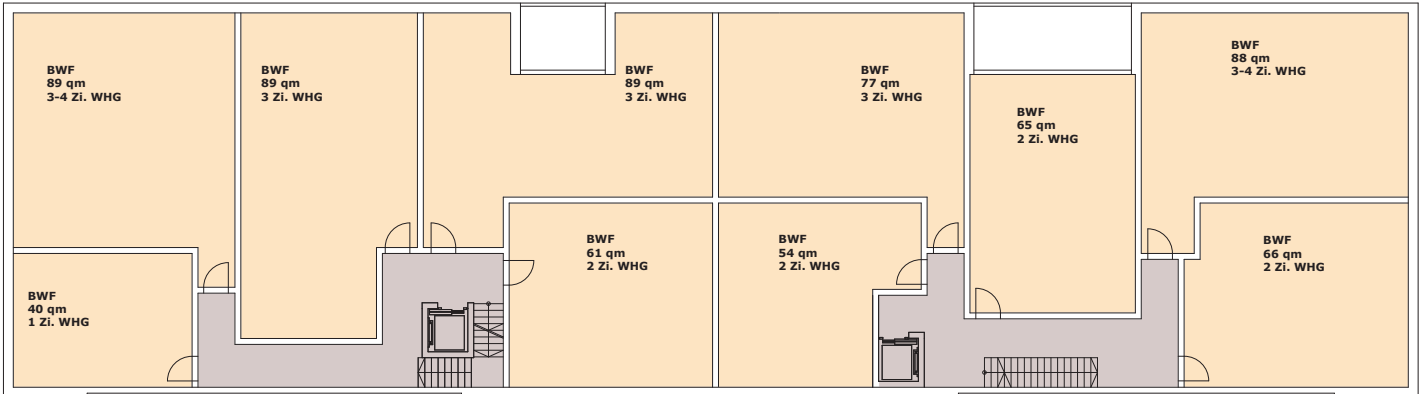
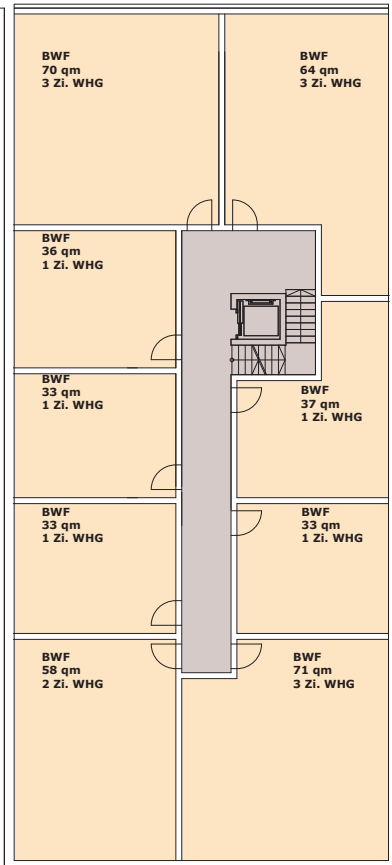
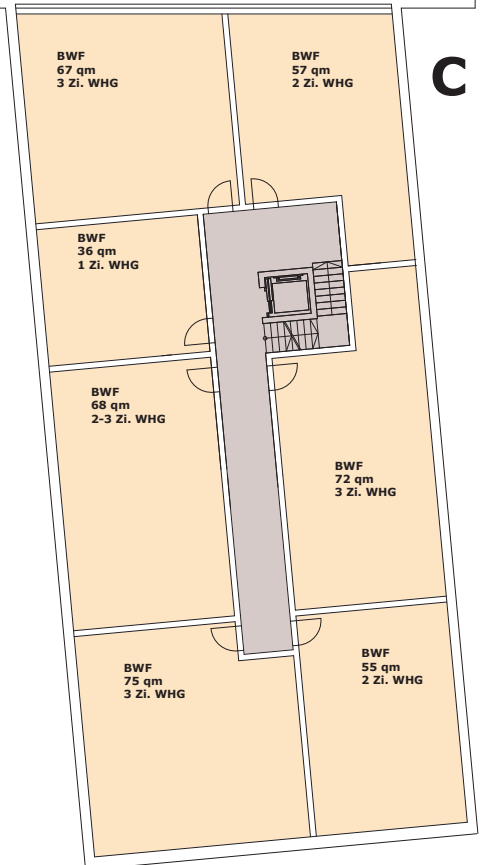


**B****C****A**

**Geschossplan  
1. Obergeschoss**

Geschossfläche = 2.028 qm  
 Bruttowohnfläche = 1.583 qm  
 Verkehrsfläche = 198 qm

Stadt Ingolstadt - Referat VII  
 V0933/19 Wohnungsgefüge  
 PIA 19.11.2019