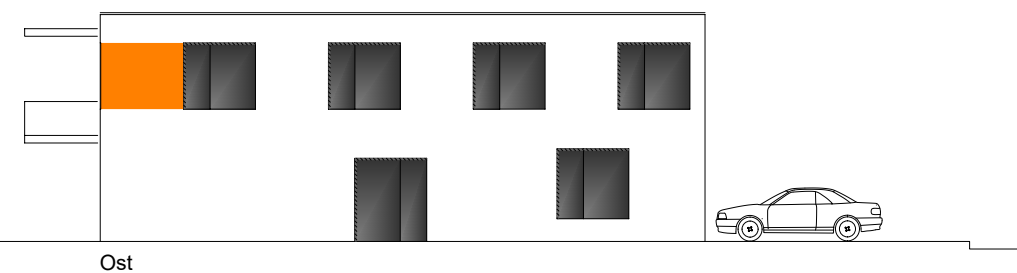
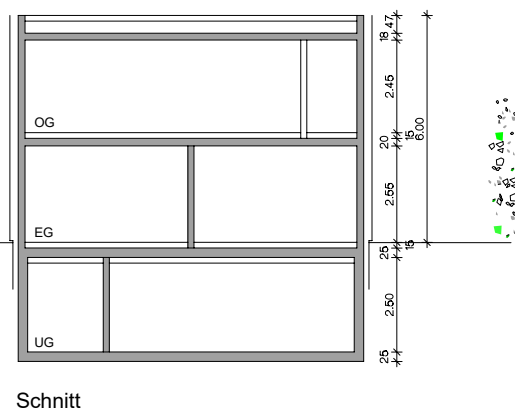


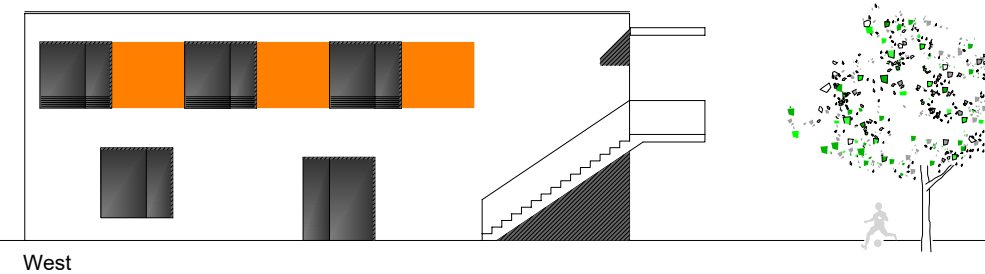
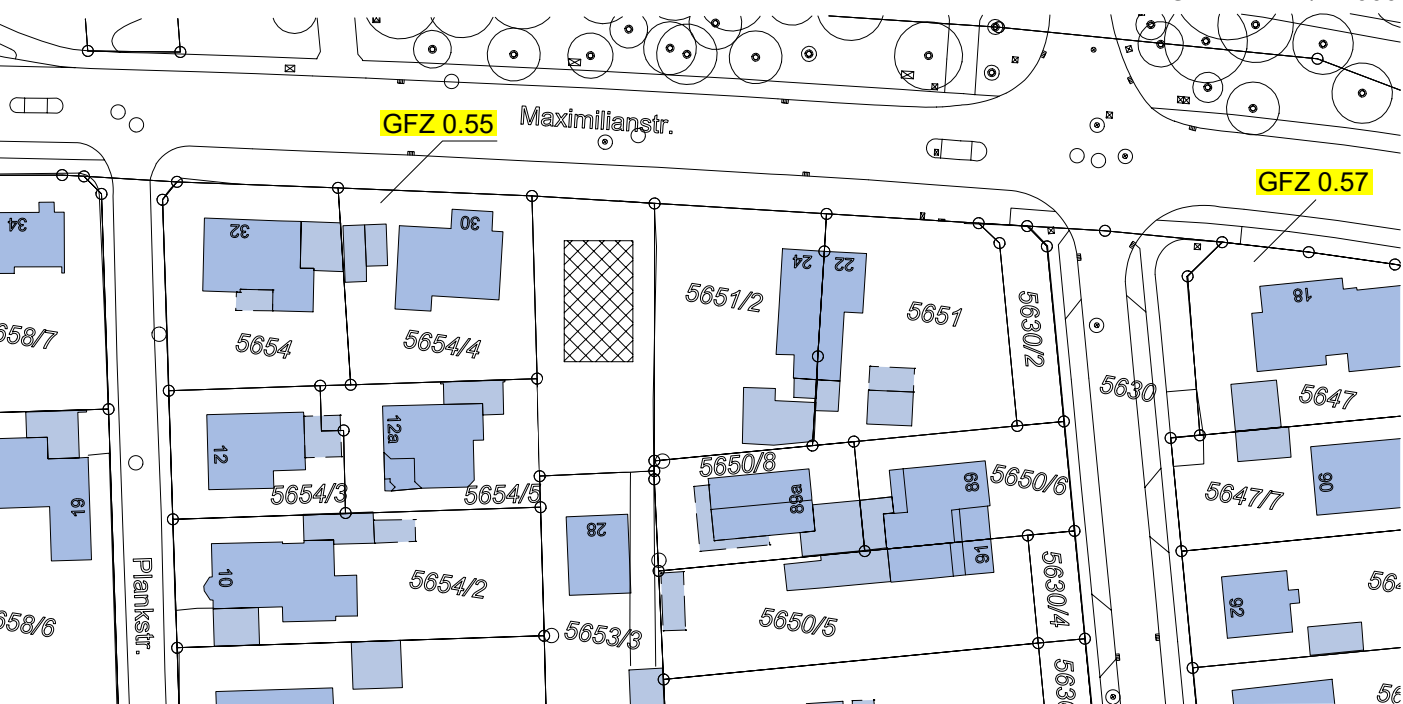
Nutzfläche EG 128.16 m²
OG 125.34 m²
gesamt 253.50 m²

Grundstücksfläche 568 m²
EG brutto 153.28 m²
OG brutto 153.28 m²
gesamt 306.56 m²

GFZ 0.539



LAGEPLAN M/1:1000



PETER-STEUART-HAUS
MAXIMILIANSTRASSE 26, IN
FINr. 5653/2 M/ 1:200

cubus33
ARCHITEKTEN - STADTPLANER
NEUBURGER STRASSE 33
85057 INGOLSTADT